

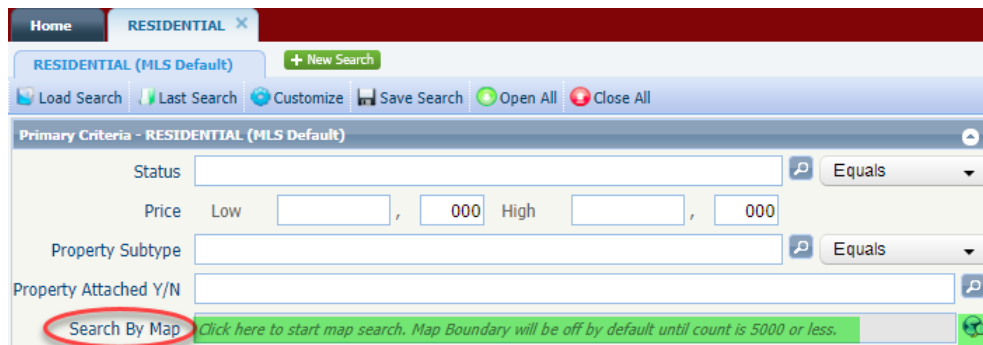
HOW TO PERFORM A MAP SEARCH

Additional Training Option:



There are two ways to begin a map search:

1. Click on the 'Search by Map' field in the search grid, or

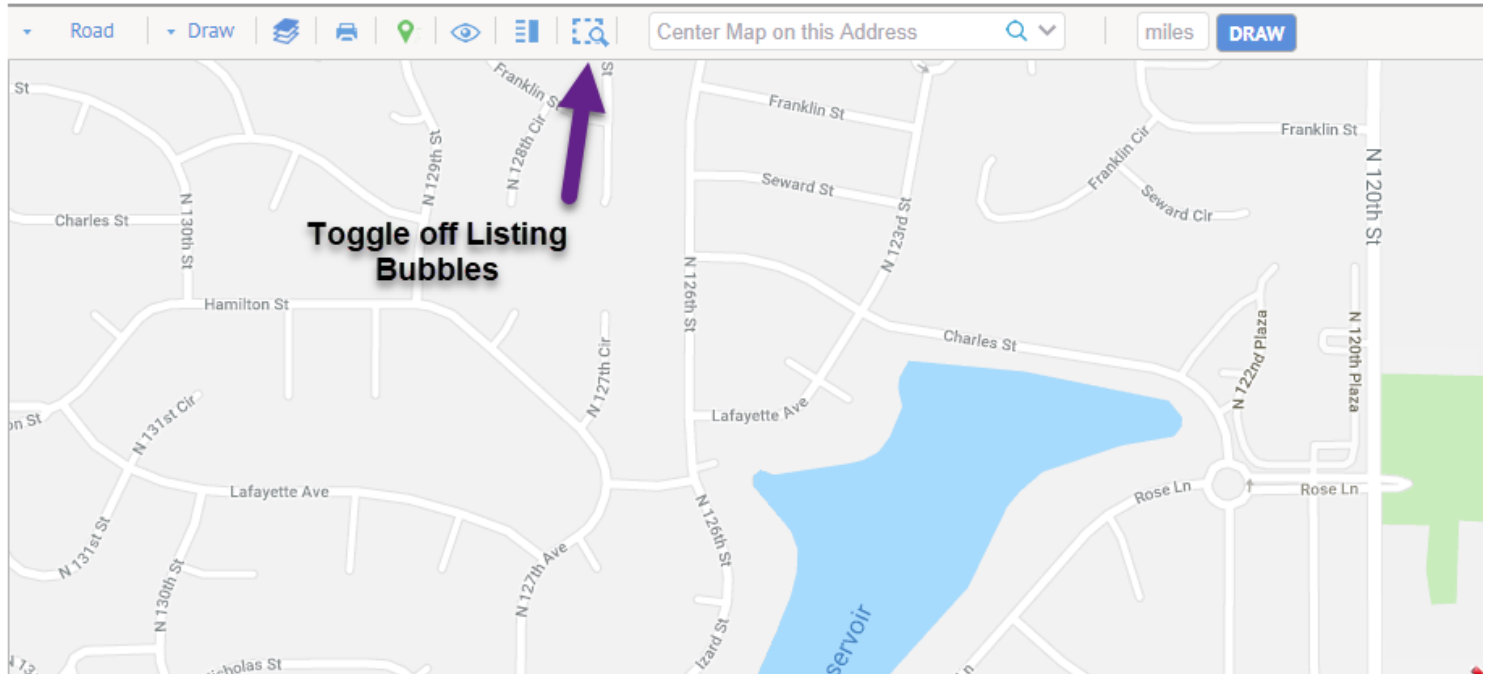


2. Click on 'Search' and under the Specialty Search menu click on Mapping.



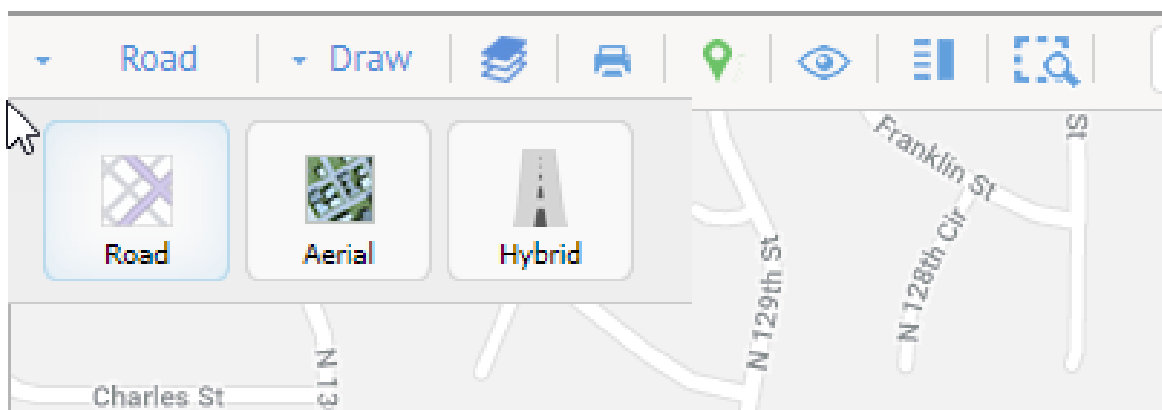
The default center of the map is determined by the address in the Paragon User profile. This is known as the default setting. This address can be changed as part of a profile change through your local association or as a matter of preference in the Preferences menu.

Google Map Search

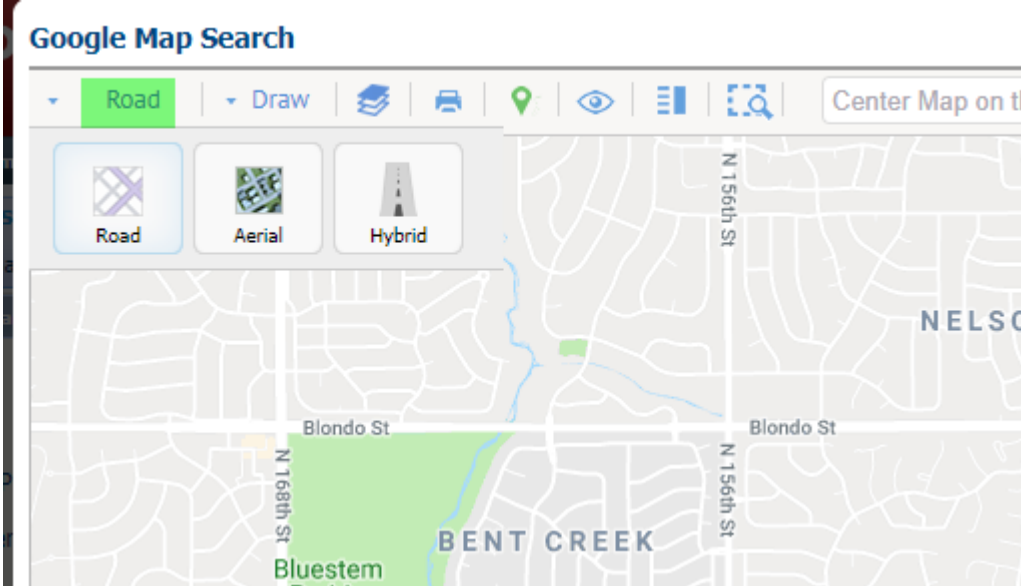


Click on the drop down by 'Road' to choose the type of view you prefer on the map.

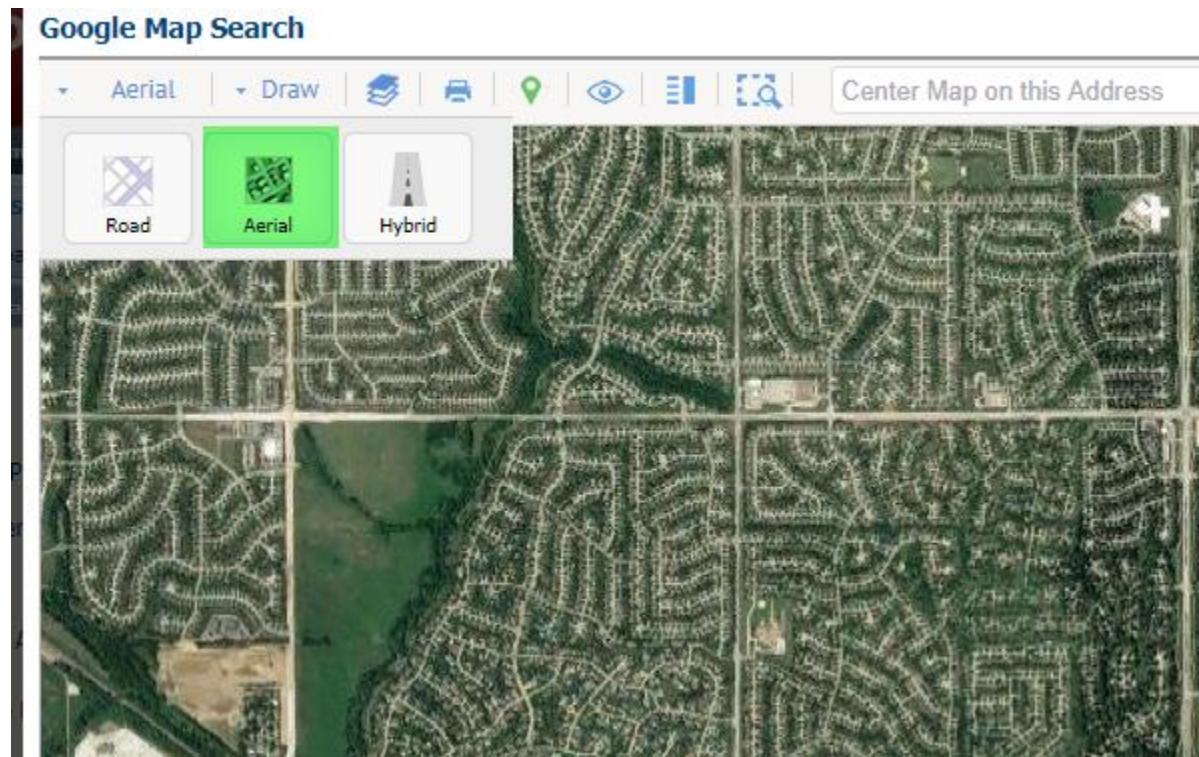
Google Map Search



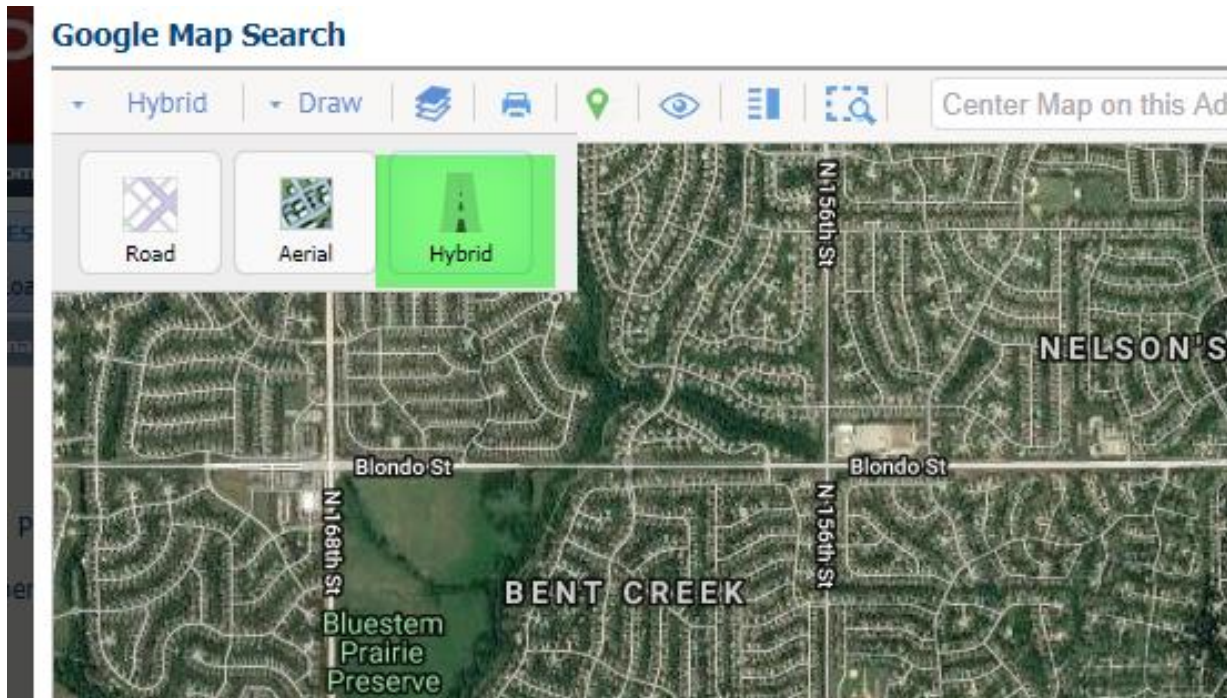
Road View- When selected, no matter the zoom level, the map will remain on the road view.



Aerial View- When selected, no matter the zoom level, the map will remain on the aerial view.



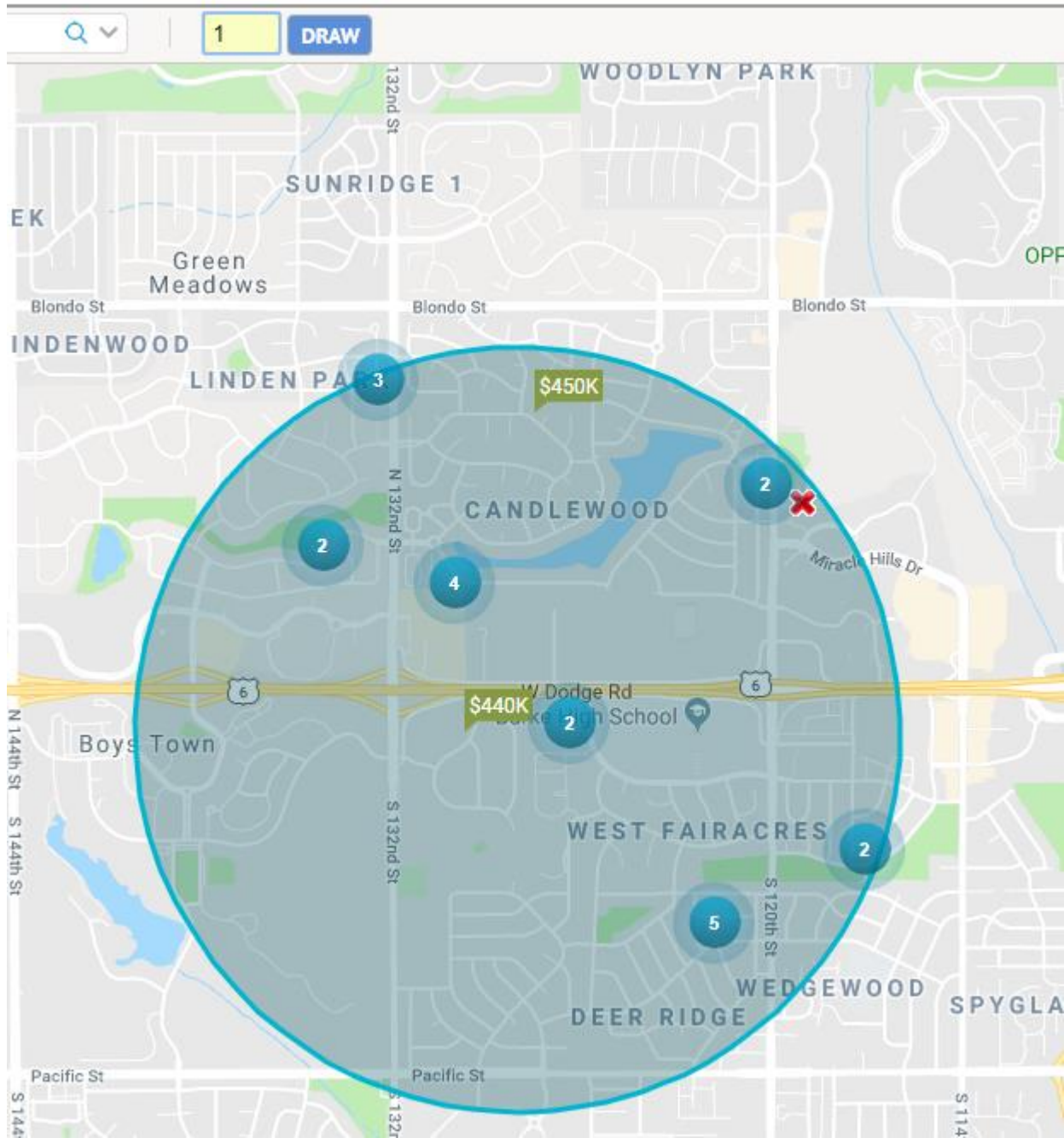
Hybrid View- When selected, Hybrid View will provide area photography with map information overlay.



Custom Address- Type in any address and click on the search icon to position the map on that address

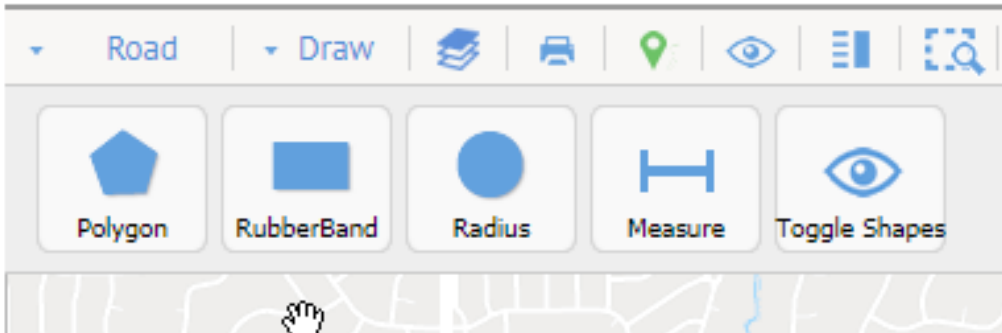


Draw by Distance - With draw by distance, you can automatically draw a radius shape from the center of the map based on the distance you enter in the box.



Draw - Draw shapes on the map to focus in on the location you want to search for listings.

Google Map Search

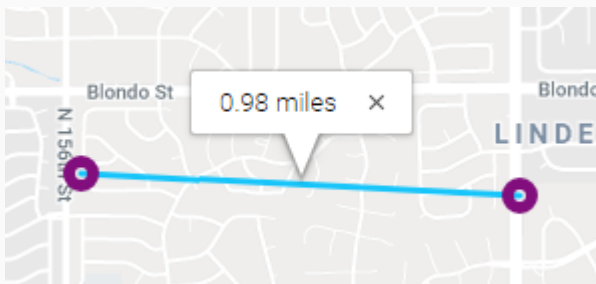


Polygon - Use the polygon shape to draw any shape you need. Follow a road way, water way, community lines etc.

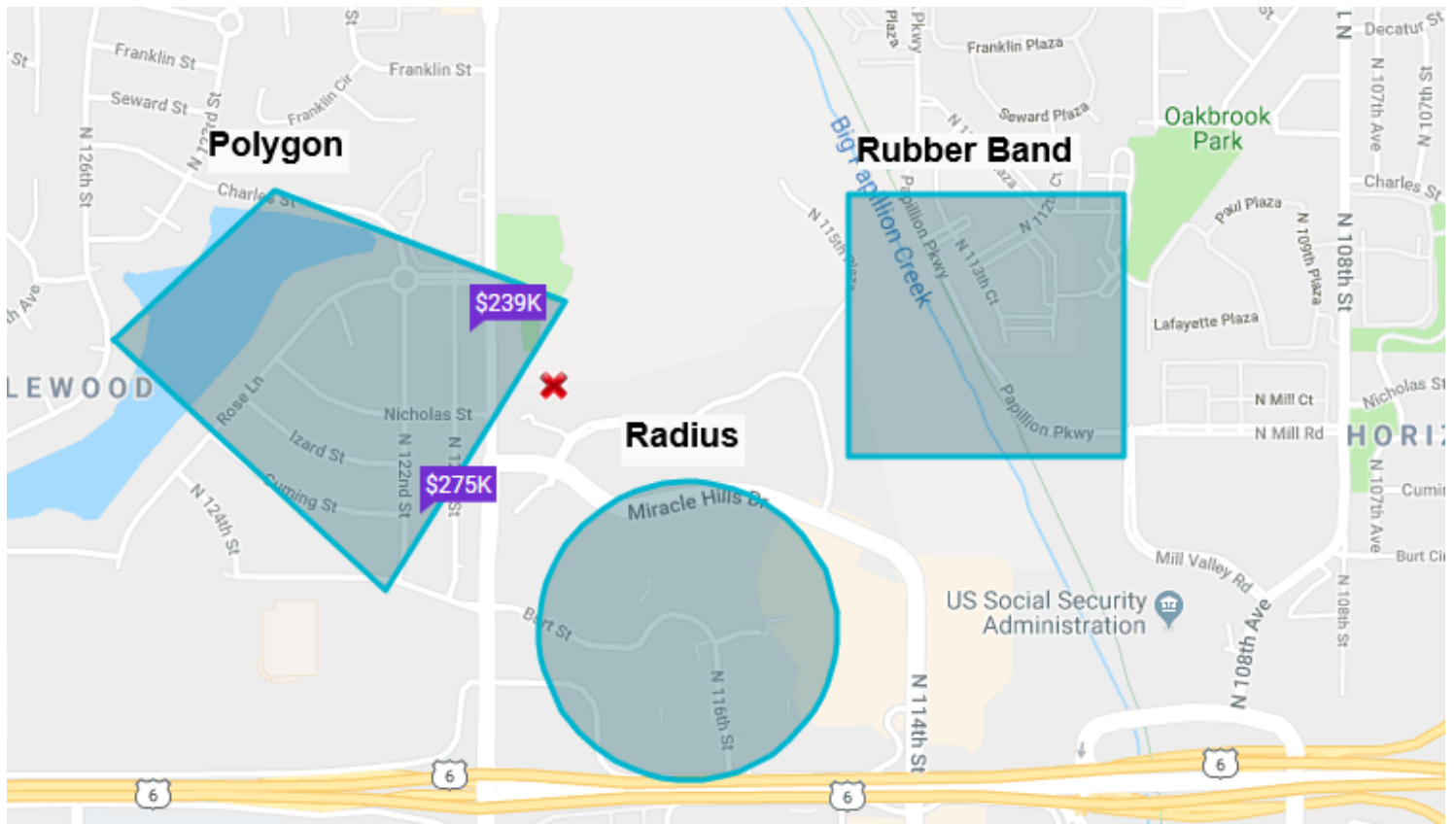
Rubber Band - Use the rubber band shape to draw a rectangle and stretch out the shape in any direction from the start point.

Radius - Use the radius shape to draw a circle out from a center point.

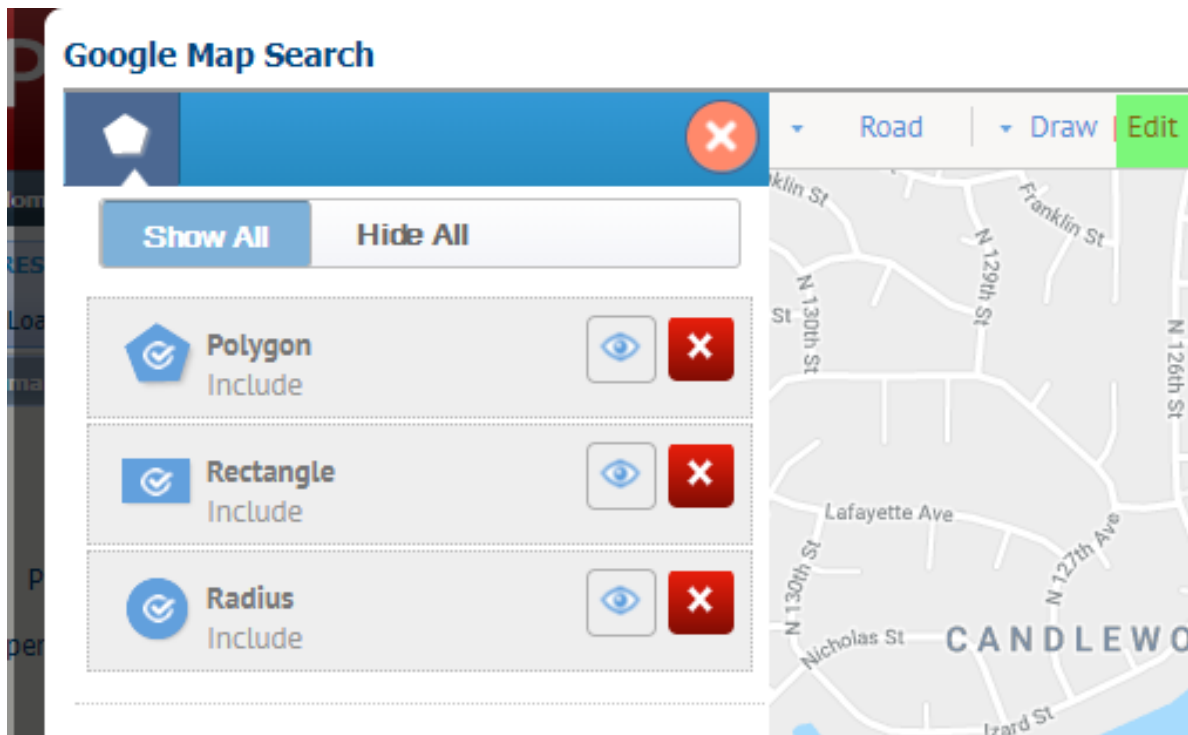
Measure - Measure the distance between points on the map.



Toggle Shapes - Toggle between shapes.

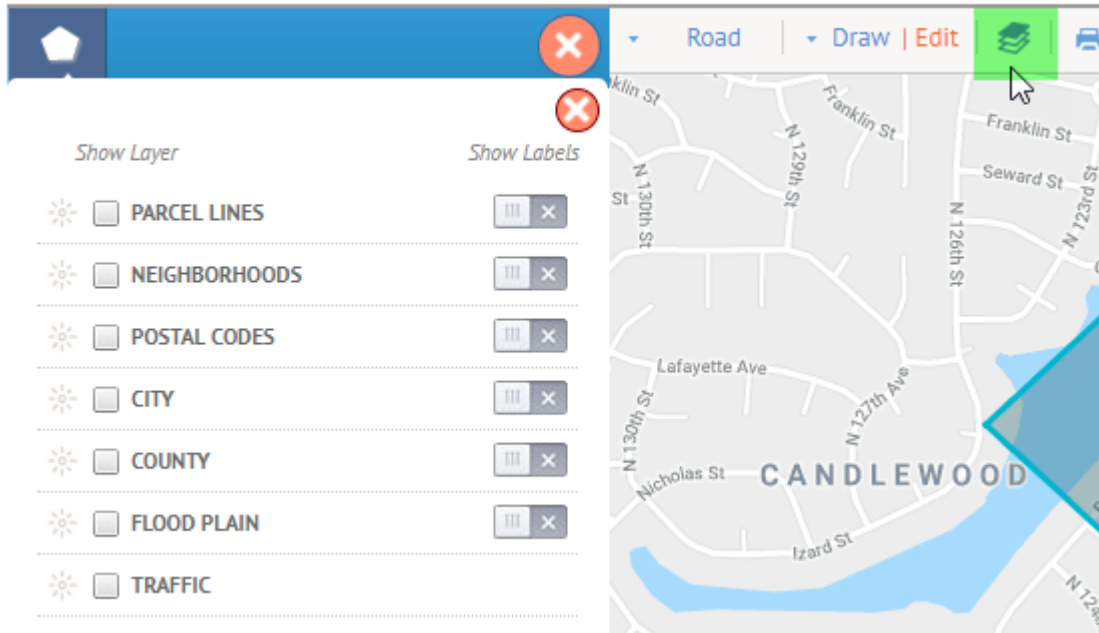


Edit any of the shapes by clicking on 'Edit' and using the menu to edit, delete or update the shape.



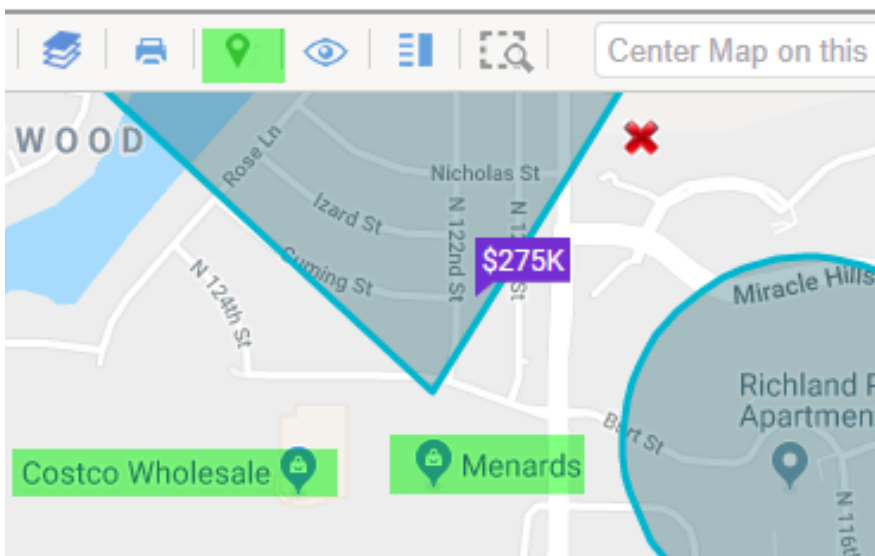
Layers - Click on 'Add Layers' to reveal and add to the map any of the layers listed in the layers menu.

Google Map Search

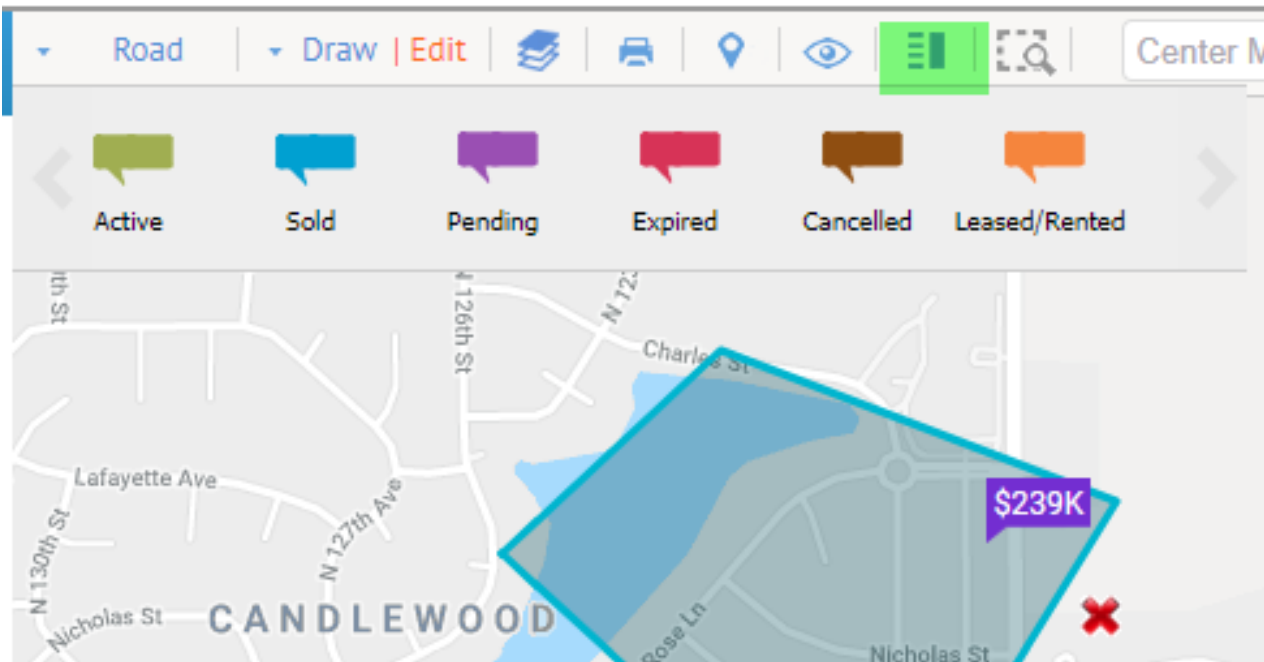


Print your map to PDF and it becomes a document you can email!

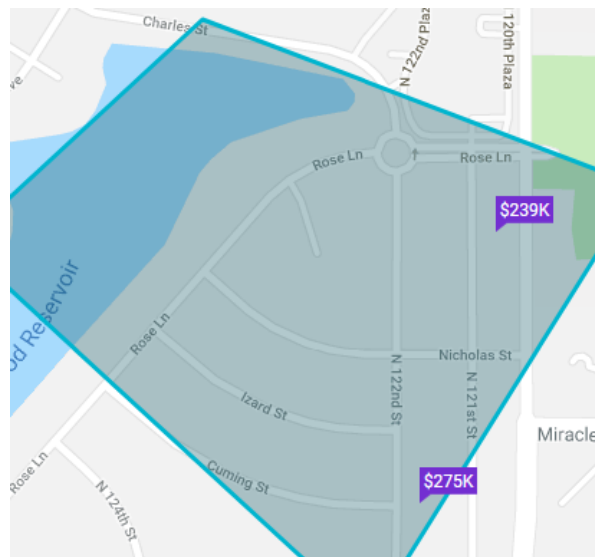
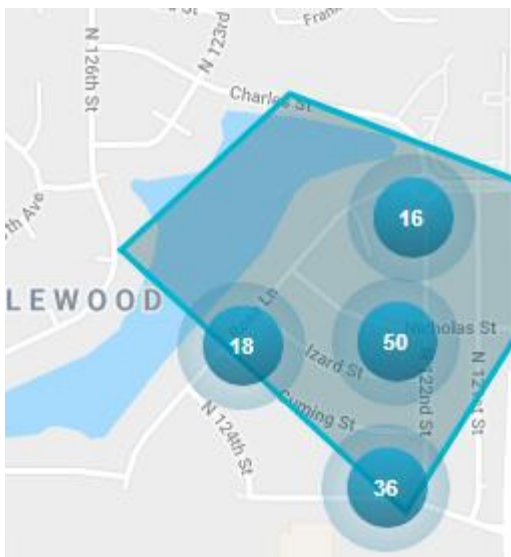
Point of Interest- Place points of interest on the map.



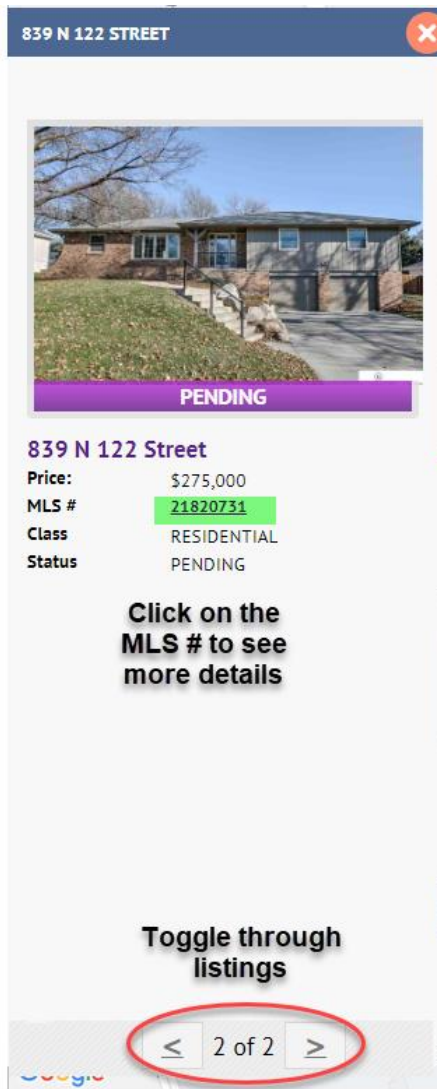
Flag Color Legend- Click on the legend to see what status the different color flags represent.



Map Listing Results- Listing results may appear as a single flag or a cluster of listing depending on your zoom level.



Listing Clusters Detail View



839 N 122 STREET

PENDING

839 N 122 Street

Price: \$275,000
MLS # **21820731**
Class: RESIDENTIAL
Status: PENDING

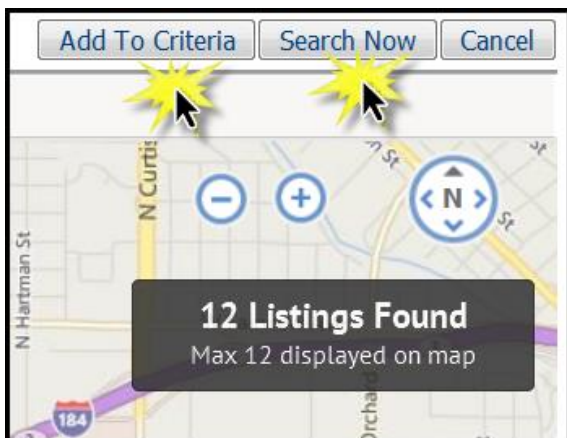
**Click on the
MLS # to see
more details**

**Toggle through
listings**

< 2 of 2 >

The image shows a mobile application interface for a real estate listing. At the top, there is a blue header with the address "839 N 122 STREET" and a red close button. Below the header is a photograph of a house. Underneath the photo is a purple banner with the word "PENDING". Below the photo, the listing details are displayed: "839 N 122 Street", "Price: \$275,000", "MLS # 21820731" (highlighted in green), "Class: RESIDENTIAL", and "Status: PENDING". A bold instruction says "Click on the MLS # to see more details". At the bottom, there is a "Toggle through listings" section with a red circle around a pagination control showing "< 2 of 2 >".

Now that you have your listings on the map, click on 'Add to Criteria' to return to the search grid or 'Search Now' to see the listings in a report view.



Add To Criteria Search Now Cancel

12 Listings Found
Max 12 displayed on map

The image shows a mobile application interface for a real estate search. At the top, there are three buttons: "Add To Criteria", "Search Now", and "Cancel". Below the buttons is a map showing a street grid. A yellow starburst icon is overlaid on the "Add To Criteria" button, and a black mouse cursor is pointing at it. Another yellow starburst icon is overlaid on the "Search Now" button, and a black mouse cursor is pointing at it. Below the map, there is a dark grey box with white text that says "12 Listings Found" and "Max 12 displayed on map". The map shows streets labeled "N Hartman St", "N Curtis", and "Orcha". There are also zoom in (+) and zoom out (-) buttons, and a compass button.